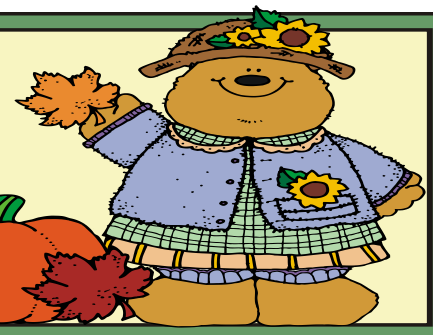
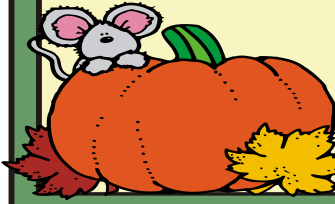


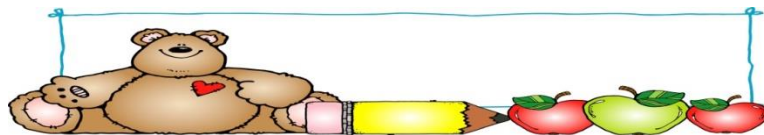
Blue Ridge Child Care Resource & Referral  
 October-November-December  
 2<sup>nd</sup> QT Training Calendar 2019



Title	NCFELD Alignment	DCDEE Topic Area	Description	Instructor	Date & Time	Location
<b>October</b>						
ITS SIDS  <b>*The next class will be in May!</b>		1, 6, 8	This training gives providers an overview of Sudden Infant Death Syndrome and identifies SIDS risk factors. This training describes ways to reduce the risk of SIDS in child care and family child care home settings.  *This is a required training for anyone working with or caring for infants and is renewable every 3 years. This training meets the requirements of the Health & Safety standards.	MaryLee Yearick	Monday, October 7 6:30-8:30  Re Deadline Oct 9	1 <sup>st</sup> Baptist-Burnsville
Emergency Preparedness Response		5	Participants will learn safe practices of being better prepared in the case of flood, fire, tornado, etc. You never know when a disaster will happen. This is a condensed training from the 5hr training in the past.	MaryLee Yearick	Monday, October 14 6:30-8:30 2hr CH  Reg Deadline Oct 1	Avery MCC
STEAM: Engaging Young Engineers	APL, LDC, CD	2	Participants will learn how to develop problem-solving skills that will boost a child's kindergarten readiness and set them up for long-term success in STEM subjects. We will cover many activities that you can take back to your classroom.	MaryLee Yearick	Saturday, October 19 8:00-1:30 5hr CH or .5 CEU's Reg Deadline October 1	1 <sup>st</sup> Presbyterian Church-Spruce Pine
Food Allergies		1, 8	Do you know the difference in food allergies and food intolerance? Food allergies can be deadly. Participants will learn the difference in these two and have a better understanding of what to do in allergy situations.	MaryLee Yearick	Monday, October 21 6:30-8:30 2hr CH Reg Deadline October 7	Avery MCC
Director's Training: Leadership		5, 6	This series in Director's Training will focus on enhancing our leadership skills ~ in your staff, your families, and your over-all success of your center business.	MaryLee Yearick	Thursday, October 24 6:30-8:30 2hr CH Reg Deadline October 10	1 <sup>st</sup> Presbyterian Church-Spruce Pine
Problem Solving	APL, LDC, CD	2	This training is for Yancey NCPK, Yancey Head Start, and Yancey Pre-school centers only. This is part 2 of an earlier training.  This training will be open to Mitchell and Avery Centers at a future date.	MaryLee Yearick	Monday, October 28 4:00-7:00 3hr CH  Reg Deadline October 10	1 <sup>st</sup> Baptist-Burnsville
<b>November &amp; December</b>						
Integrating Picture books with Art and Cooking	APL, LDC, CD	2	Participants will learn easy-to-do activities that expand and enhance literacy skills. See how you can dramatically increase children's literacy skills by encouraging them to represent concepts through art and cooking. We will do many activities you can take back to your classroom.	MaryLee Yearick	Saturday, November 2 8:00-1:30 5hr CH or .5 CEU's Reg Deadline October 21	1 <sup>st</sup> Presbyterian Church-Spruce Pine

Teaching Numeracy: Language and Literacy with Blocks	APL, LDC, CD	2	Teaching numeracy, language, and literacy with blocks helps teachers and providers observe and plan for young children's learning-enriched play with blocks. Learn new ways to enhance your block center.	MaryLee Yearick	Monday, November 4 6:30-8:30 2hr CH Reg Deadline October 21	1 <sup>st</sup> Baptist Church-Burnsville
The Inclusive Classroom		9	Participants will have a better knowledge of how to include children with disabilities by reviewing rights and responsibilities, reviewing research, and finding community partners and learning how to develop inclusion policies for your center and classroom.	MaryLee Yearick	Tuesday, November 5 6:30-8:30 2hr CH  Reg Deadline October 21	Avery MCC
Trees Study	APL, LDC, CD	2	This study builds upon children's interest in trees to help them explore science & social studies. Rather than emphasize naming different trees, this study focuses on helping children develop an understanding of the characteristics of trees & their role in our natural & man-made worlds.	MaryLee Yearick	Monday, November 11 6:30-8:30  Reg Deadline October 21	1 <sup>st</sup> Baptist Church-Burnsville
Strategies in Challenging Behavior *	ESD, CD	2, 3	Based on the CSEFEL Pyramid Model, participants will learn how to use different strategies for challenging behaviors for all age groups.	Michelle Boyles	Monday, November 18 & Tuesday, Dec. 3 6:30-8:30 2hr CH Reg Deadline November 4	November 18 Avery MCC  December @ BRPFC
Introduction to Cultural Competence: Awareness		4	This course is a beginning step to preparing the early childhood workforce to increase their awareness and understanding of culture and cultural competence. It focuses on defining culture, cultural conditioning and culturally responsive teaching and the role of engaging families. It is designed to be interactive and self-reflective	MaryLee Yearick	Monday, December 9 & Tuesday, December 10  5hr CH* For both sessions Reg Deadline Nov 18	Blue Ridge Partnership for Children  <b>*10 people must attend this training for this to make*</b>

**You MUST Pre-Register to Attend a Training**  
**There is a \$10.00 for a NO SHOW without cancelling by Noon the day of the training**



**Parents & Child Care Staff ~ Everyone is Welcome to Attend Trainings**

**Trainings are held at the following locations:**

**BRPFC – Blue Ridge Partnership for Children located at 392 East Main in Burnsville**

**1<sup>st</sup> Baptist Church – located at 11 Town Square in Burnsville**

OR

**1<sup>st</sup> Presbyterian Church - located at 930 Greenwood Road in Spruce Pine**

OR

**Avery Co. Mayland Community College – located at 785 Cranberry St. in Newland  
or as otherwise indicated**

\* Participants arriving over 10 minutes late or leave before training is over will not get full credit for the class.  
Credit will be based by the amount of time you are in attendance.

\* There is a **\$10.00** charge if you do not show up for a class without canceling your reservation.

\* Please register by the deadline date!!

\*You MUST cancel 2 days prior to the training or there is a \$10.00 charge.

\* Child Care is NOT provided during Professional Development Training sessions.      \* Children are NOT allowed to attend PD Training sessions.

☛ All participants **MUST** be Pre-Registered in order to attend Professional Development Training sessions. ☛

To register for a class or for more information please contact

MaryLee Yearick CCR&R Coordinator Yancey Co. Office 828-682-0717

**\*\* All Professional Development trainings are FREE with the exception of CPR / 1<sup>st</sup> Aid or if otherwise indicated \*\***

Blue Ridge Partnership for Children will be **CLOSED** on the following days~

Thursday, November 28 and Friday, November 29

Monday, December 23 Tuesday, December 24 Wednesday, December 25



Are there topics of interest you would like to see as a Professional Development opportunity?

Just let us know!

Professional Development topics of interest suggestions~

